

# SMT AUTO SPLICING SYSTEM

The automation of the SMT industry continues to evolve. Today the topic of managing operations systematically and integrating traceability information to the MES (Manufacturing Execution System) has become crucial in achieving higher productivity within today's SMT factories. Youngpool Technology's L-3 Automatic Splicing Machine has been developed as a solution to this challenge. The L-3 helps to improve outgoing quality, enhance management via MES, and reduce operating cost.

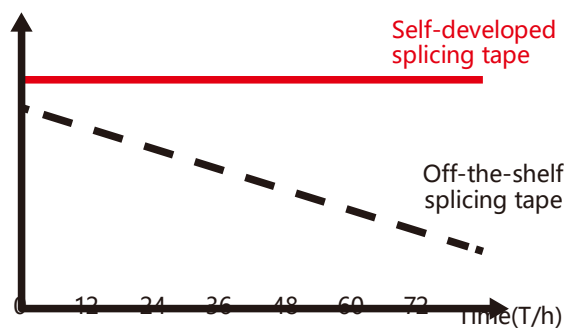
## L-3



- Dedicated 8mm carrier tape splicing (01005 capable)
- Carrier tape thickness 0.25–1.4mm (paper) and 0.25-2.5mm (embossed) applicable
- Battery can support 12-16 hours of continuous operation
- First Pass Yield at 98% or above
- Capable for MES integration, connectivity via Bluetooth and Wi-Fi
- Validation function available in both stand-alone and online mode
- Empty-pocket detection using vision inspection
- Power-assisted wheels to facilitate movement
- Ergonomic design for ease of use
- Intuitive graphic interface for easy operation

### Adhesion strength and durability

Adhesion Strength



### Carrier Tape Vision Inspection System

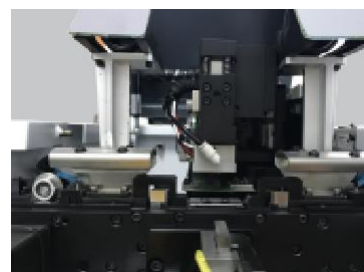
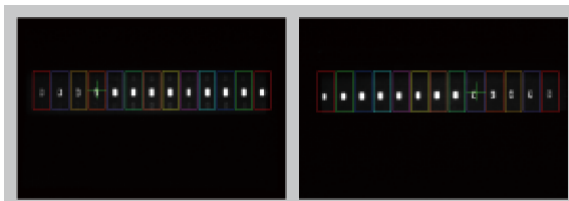


**Proprietary placement head**

### Rewinder with sensors



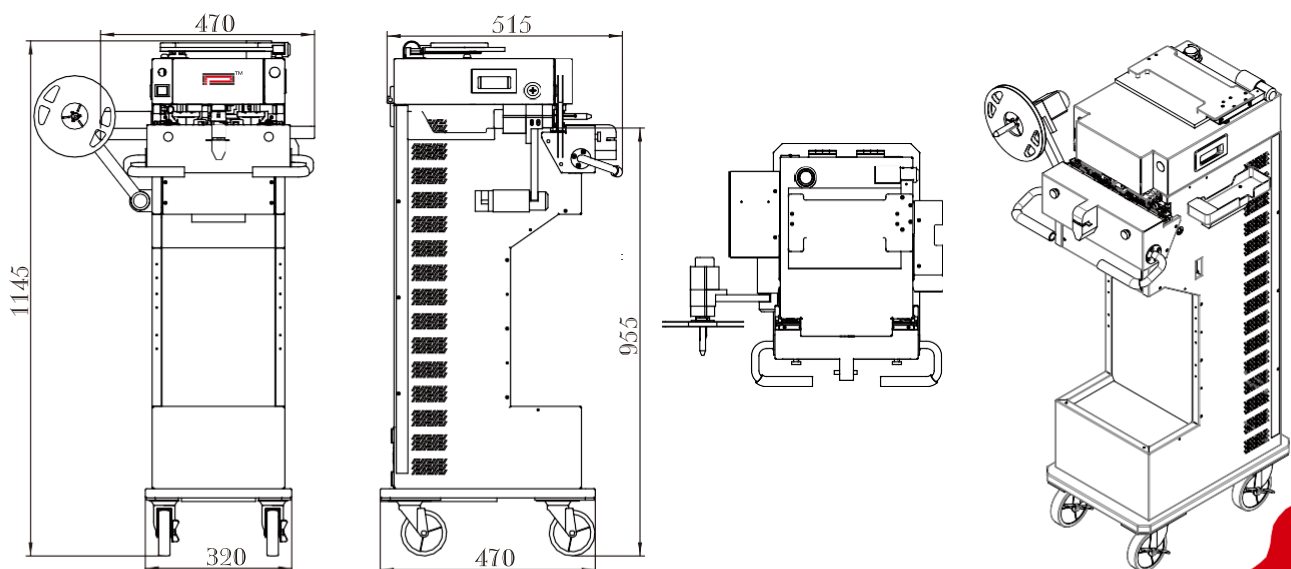
### Empty-pocket detection



## TECHNICAL SPECIFICATIONS

<b>Facilities Requirements</b>	Machine Dimension (mm)	470(W) × 515(L) × 1145(H)
	Weight (kg)	65
	Safety	Fully enclosed design with safety interlock switches to protect operator
<b>Conveyor</b>	Component Height (mm)	955
<b>Power Supply</b>	Power Source	60Ah Battery
	Operation Time (when fully charged)	12-16h
	Charging Voltage	24V DC
	Power	100W
<b>Motion System</b>	Repeatability (mm)	0.1
	Positioning accuracy of splicing tape (mm)	±0.2
<b>Carrier Tape</b>	Automatic Width Adjustment (mm)	8
	Minimum Length for Splicing (mm)	140
<b>Component Reel</b>	Motorized Winder	Standard Configuration
	Reel Size (mm)	≤φ380 (consult Youngpool for special requirements)
<b>Splicing Rate</b>	Cycle Time (sec)	≤10S (not including loading time)
<b>Software and Programming</b>	Control	Computer Control
	Operating System	Windows Interface
	Communication with MES	Customizable
	Available Information	Barcode Information, Battery Level, Alarms, Parameter Settings, Splicing Records
<b>Options and Accessories</b>	Carrier Tape Vision Inspection System	Available as Option
	Power-assisted Wheels	Available as Option
	AGV version	Available as Option
	Label Printer	Available as Option
	Barcode Scanner	Standard Configuration
	Automatic cutter for pre-cut	Standard Configuration
<b>Extension Port</b>	USB2.0	Standard Configuration

## DIMENSIONS



Shenzhen Youngpool Technology Co., Ltd

SZ Tel: +86 755 2782 3996 Fax: +86 755 2782 3995  
 Add: 2F, Block 13B, Wutong Island, Gushu, Baoan  
 District Shenzhen, PRC

<http://www.youngpool.com>

HK Tel: +852 2668 1868 Fax: +852 2668 1899  
 Add: Room 803, Chevalier House, 45-51 Chatham  
 Road South, Tsim Sha Tsui, Kowloon, Hong Kong

- Published in August 2020, All Rights Reserved
- All specifications are subject to change as a result of technical developments or advances. For questions on our products, please contact Youngpool Technology (information@youngpool.com) or our local representative(s)

